

# Air-fix 22B1

Machined Work Piece Fixture

It is a "Time Saving Fixture" that increases productivity by moving a coordinate measuring machine or a work on a stone surface plate smoothly and fixing it tightly.



- This device firmly adheres to the surface plate just by supplying compressed air.
- It can be easily attached/detached and moved by simply pressing the exhaust port with your finger even during adsorption.



### Work positioning

If you decide the position to hit the workpiece in advance, you can improve the efficiency of inspection of mass-produced products simply by replacing the workpiece.



### Fixing measuring instruments

If you put your existing magnet stand on this product, you can use the magnet stand as it is on the stone surface plate.



### Fixing large workpieces

Workpieces that do not fit on the Eco-fix base plate can be easily fixed using the spring clip.

## ■What is Air-fix ?

It is a vacuum adsorption type fixture that can fix a workpiece at any position on a CMM or a granite surface plate.

Firmly adheres to the surface plate by supplying compressed air.

Can be used in combination with Mitutoyo Eco-fix \*

\*Eco-fix is Mitutoyo's clamping tool. By combining each element like a toy block, it is a clamping system that can easily fix various objects to be measured.

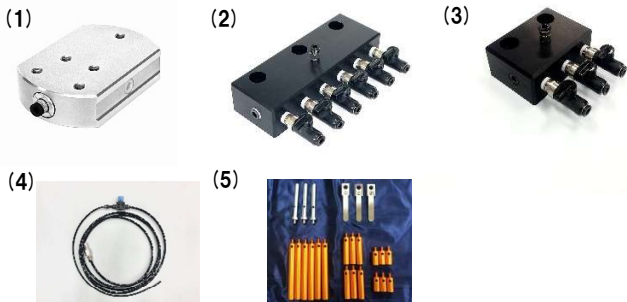
\* 3-port manifold and 6-port manifold are available as options. Please contact us for details.

\* Air supply equivalent to 0.4 MPa is required.

\* This product was jointly developed by Sasaki Koki Co., Ltd. and Mitutoyo Co., Ltd. by utilizing the open patent of Mitutoyo Co., Ltd. Furthermore, a joint patent application has been filed for this product.

[Patent No. 4616563] [Patent application 2022-042420]

## ■Product configuration



(1) Air-fix Body (1 Unit)

### Optional Items

(2) 6-Port Manifold (3) 3-Port Manifold (4) Piping Set  
(5) Clamping Tool Expansion Set

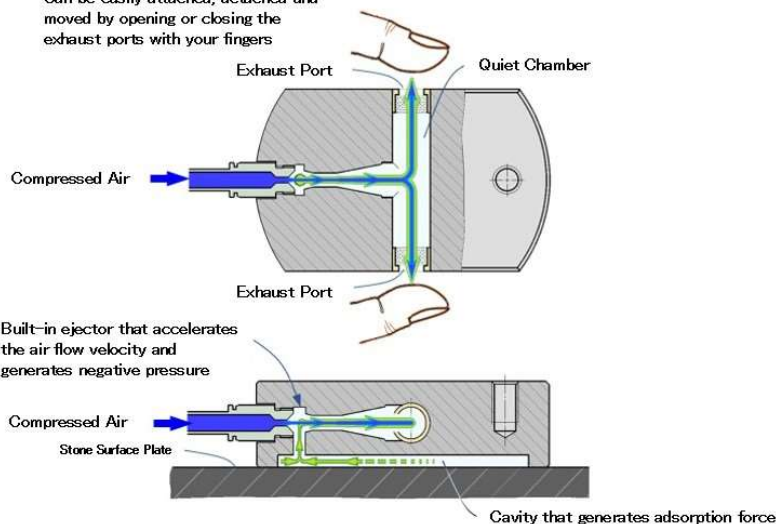
\*It is recommended to fix the workpiece in 3 places (3 units of Air-fix) or more on the CMM.

\*Commercially available air tubes (Φ4mm) and struts can be used.

\*Mitutoyo standard parts can be used for clamping tool parts.

## ■Adsorption Principle

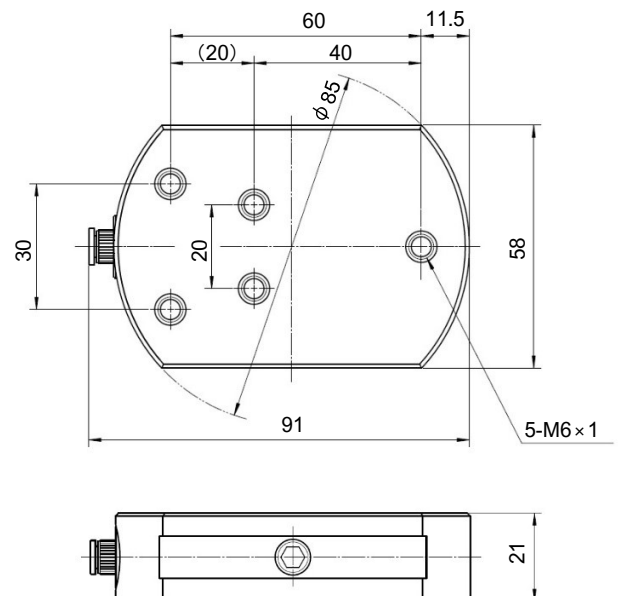
Can be easily attached, detached and moved by opening or closing the exhaust ports with your fingers



## ■Specifications

Size	21 mm×58 mm×91 mm
Weight	630 g
Air consumption flow rate	8 L/min <In standard condition>
Adsorption retention	200 N (20.4 kgf) <Vertical direction>
	65 N (6.6 kgf) <60mmSpring plate tip>
Quietness (Operating sound)	50dB
	Estimated operating noise is 50dB, which is equivalent to a quiet office.
Carrying weight	Φ 12 mm location pin up to 50 mm length : max 10 kg, over 50 mm up to 100 mm : max 1 kg limit Φ 20 mm location pin up to 50 mm length : max 75 kg, over 50 mm up to 100 mm : max 10 kg limit

## ■Dimensional drawing



[Manufacturer]

**Sasaki Koki Inc.**

〒213-0006

1-9-33 Shimonoge, Takatsu-ku, Kawasaki City,

Kanagawa Prefecture 213-0006 (Zip code), Japan

TEL +81-44-844-0338 FAX +81-44-822-0922

U.R.L. <https://www.sasaki-koki.co.jp>



[Sales Agent]

